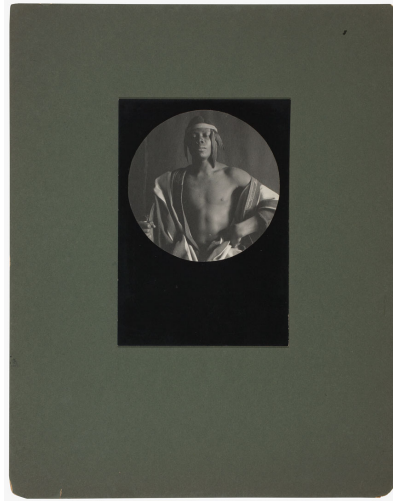


OBJECT RESEARCH



F. Holland Day (American, 1864–1933)

Ethiopian Monarch

1897, printed c. 1902

Platinum print

Alfred Stieglitz Collection

AIC accession number: 1949.857

Stieglitz Estate number: N/A

Inscriptions: signed: inscribed "original print by F.H. Day. From Jos. T. Keiley Collection. Presented to Stieglitz 1902" in pencil on verso//

Dimensions: 10.9 cm (image/paper diameter); 17.8 x 12.3 cm (first mount); 35.6 x 27.9 cm (second mount)

Print thickness: N/A

Mount: Original

X-ray fluorescence (XRF) spectrometry:
See below

X-RAY FLUORESCENCE (XRF) SPECTROMETRY

XRF spectral readings were taken from the recto of the work and from the mount when available. The elements listed below have been positively identified in the work; elements in bold have been attributed to the processing of the print.

Print: **Fe, Pt**

Mount: Ca, Cr, Mn, Fe, Zn, Sr, Pb

The graph below shows XRF spectra for three distinct measurement areas on the print: the darkest, maximum-density image area (Dmax, purple); the lightest, minimum-density image area (Dmin, green); and the mount, when available (orange). The background spectrum (gray) represents the characteristic contribution of the instrument itself as measured on a Teflon reference and is included in order to discount irrelevant elements from the print's signature. Elements were identified based on the presence of their characteristic peaks. Analysis was performed with a Bruker ARTAX air-path portable micro-XRF system equipped with a laser pointer, an integrated camera system, a Mo 12.5 μ m filter, and a Mo tube. Measurements were taken for 250 LT at 50 kV and 800 μ A. The spectrum below illustrates the significant peaks for this print in the energy range from 3 to 16 keV.

Figure 1. (right)
Locations of XRF measurements



Figure 2. (below)
XRF spectra from the Dmax, Dmin, mount,
and background signal produced by the
analyzer.

